

A brief description of each new Subassembly follows; refer to the Help files for extensive parameter listings.

The 16 new subassemblies included with Civil 3D 2007 are illustrated and explained below.

Generic Pavement Structure

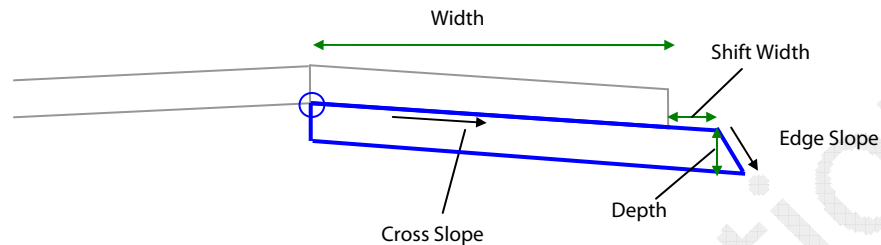


Figure 10.26 – Generic pavement structure.

For creating simple pavement conditions, these can also be stacked above one another, respond to Superelevation criteria, and can be linked to an alignment and profile.

Shape Trapezoidal

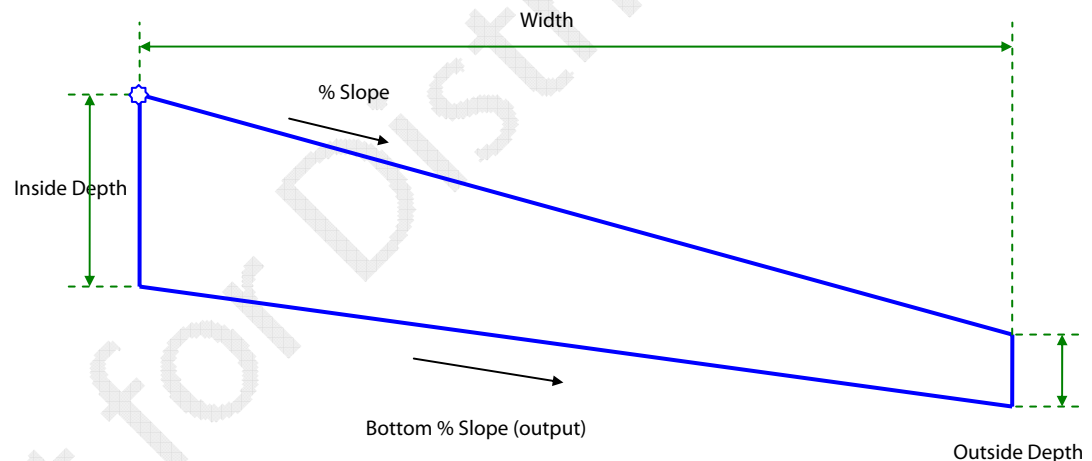


Figure 10.27 – Shape trapezoidal.

This subassembly, for use as a lane or shoulder, is highly customizable in shape, size, and material, responds to Superelevation criteria and can be linked to an alignment and profile. It can also be stacked.

Shoulder Extend All

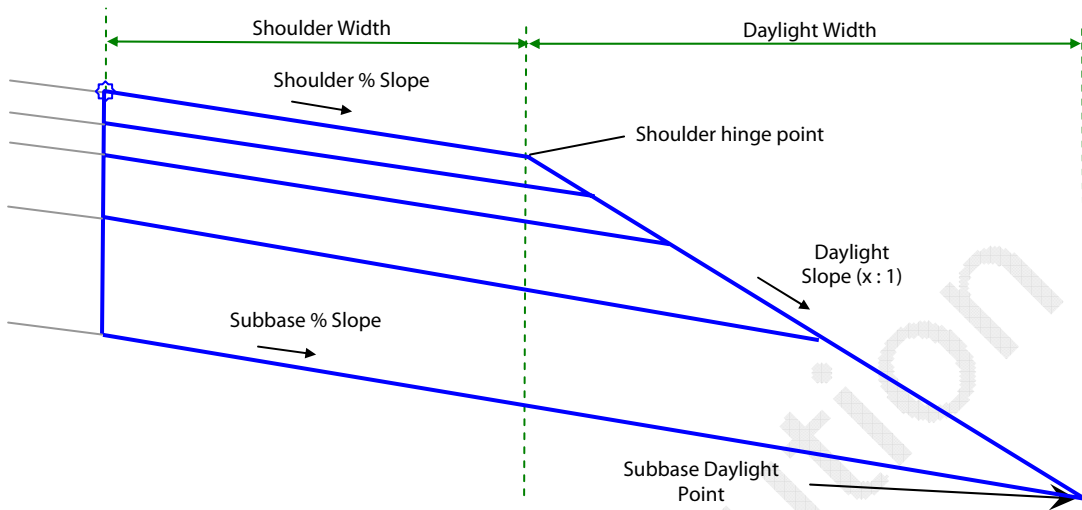
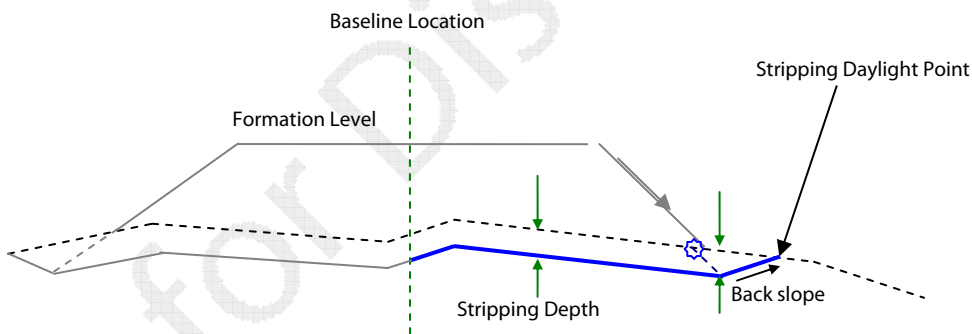


Figure 10.28 – Shoulder extend all.

This Subassembly is intended as a paved shoulder, and is composed of two pavement layers, a base layer and a subbase layer, with all layers extending to a daylight slope. It responds to Superelevation criteria and can be linked to an alignment.

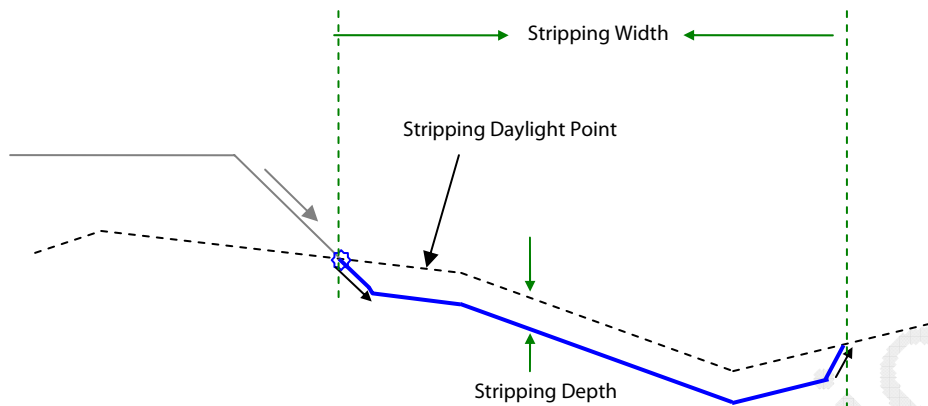
Stripping Pavement



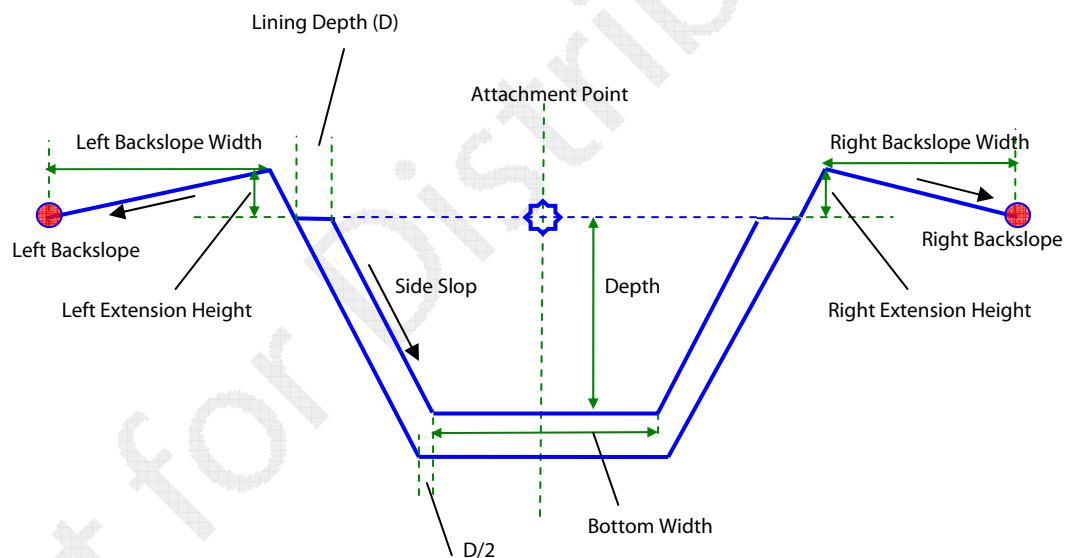
Case 1 – Stripping with ForeSlope

Figure 10.29 – Stripping pavement.

This Subassembly allows the user to strip a top layer for a specified depth. Refer to the help files for *Case 2 – Stripping to Daylight Extents*.

Stripping Topsoil*Figure 10.30 – Stripping topsoil.*

This Subassembly allows the user to strip topsoil for a specified depth.

Channel*Figure 10.31 – Channel*

This Subassembly creates an open channel with the option to also create lining and backslope links. The attachment point is in the center of the ditch.

Channel Parabolic Bottom

This Subassembly is exactly like the Channel Subassembly, except it creates a parabolic (curved) bottom on the channel.

Side Ditch

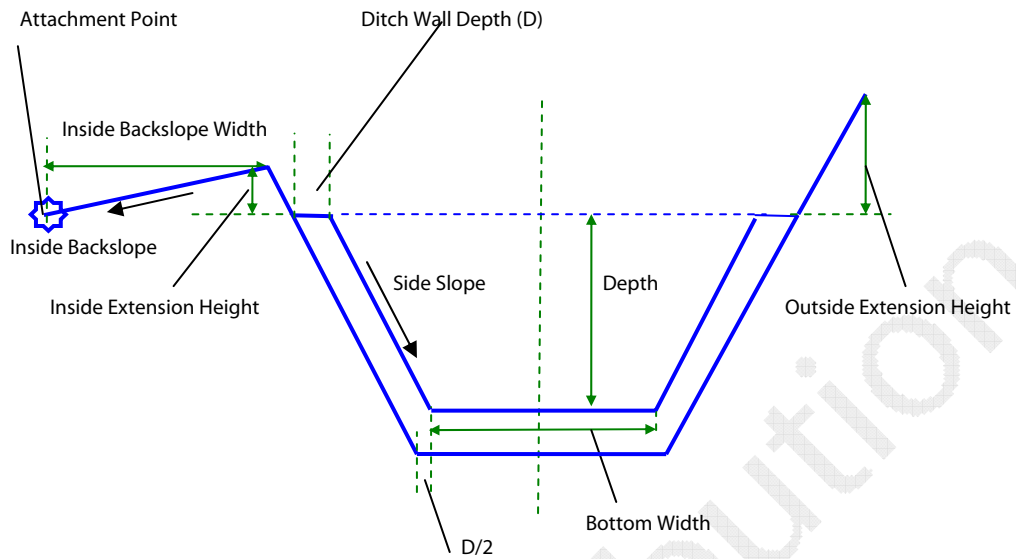


Figure 10.32 – Side ditch.

This Subassembly creates a ditch structure, with the option to include foreslope and backslope links. The attachment point is on the Inside Backslope.

Side Ditch U Shape

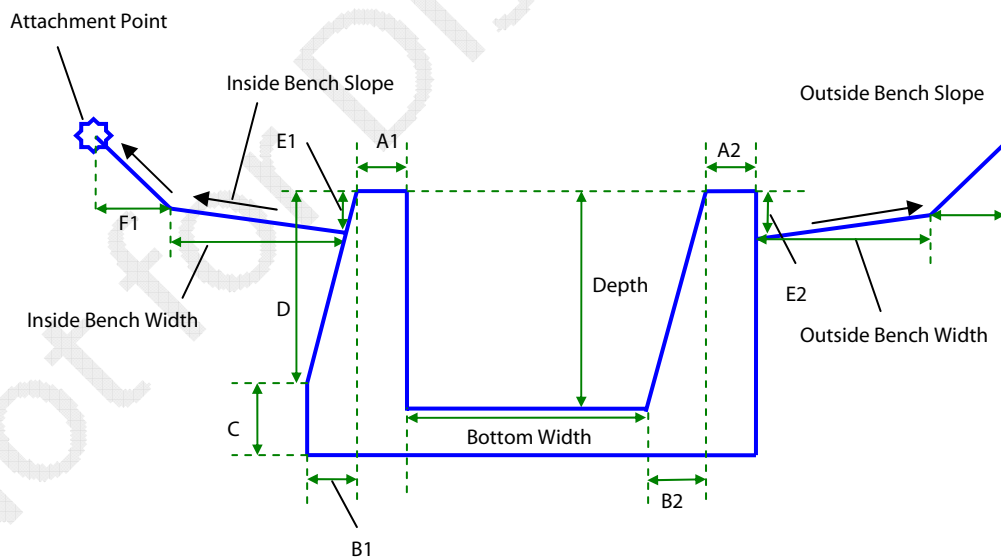


Figure 10.33 – Side ditch U shape.

This Subassembly creates a ditch structure, with the option to include bench and backslope links on the inside and outside of the structure.

Side Ditch with Lid

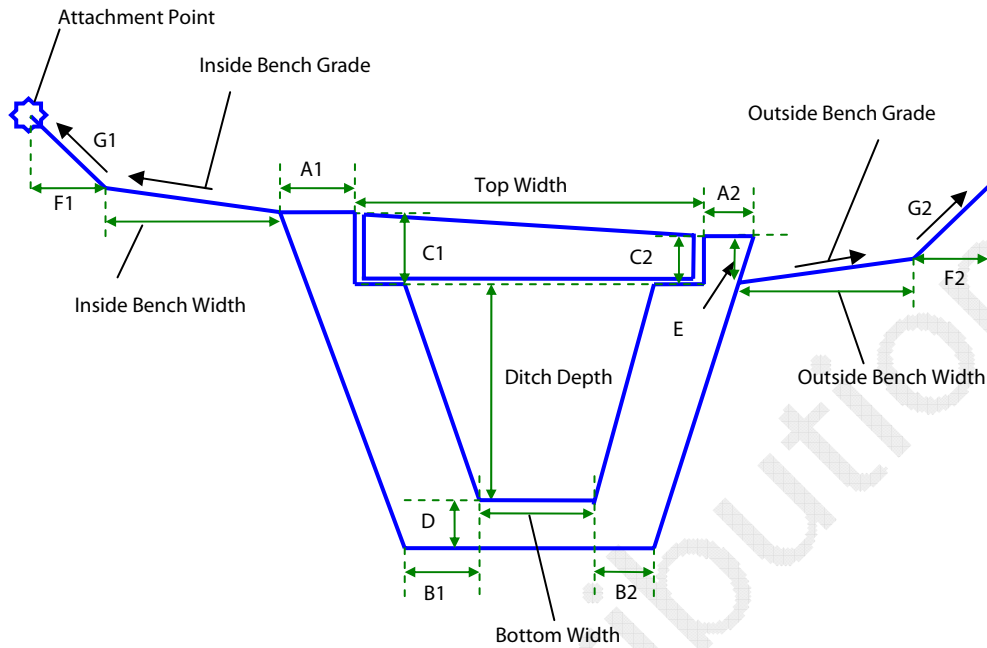


Figure 10.34 – Side ditch with lid.

This Subassembly creates a ditch structure with a lid, with the option to include bench and backslope links on the inside and outside of the structure.

Trench with Pipe

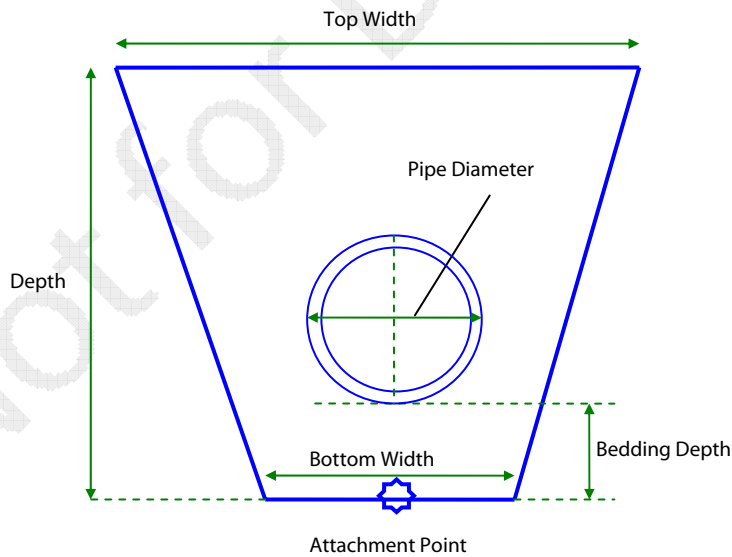


Figure 10.35 – Trench with pipe.

This Subassembly creates a stone-filled drain structure surrounding a circular pipe.

Retain Wall Tapered

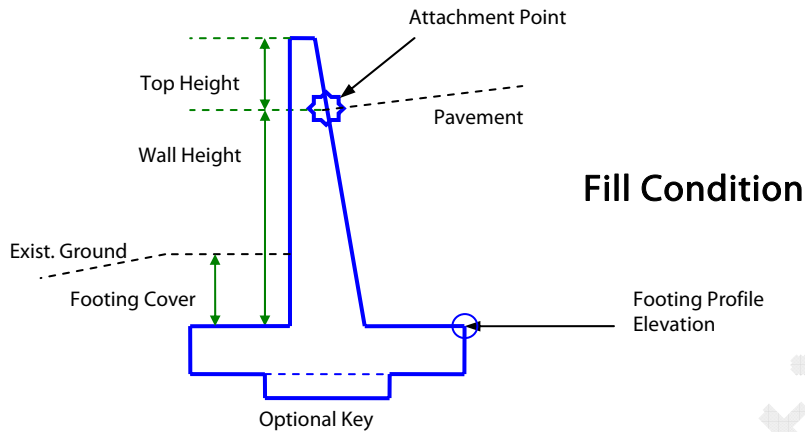


Figure 10.36 – Retain wall tapered.

This Subassembly creates a retaining wall structure with one tapered side and an optional key on the bottom. See the Civil 3D 2007 Help file for Cut Condition.

Retain Wall Tapered Wide

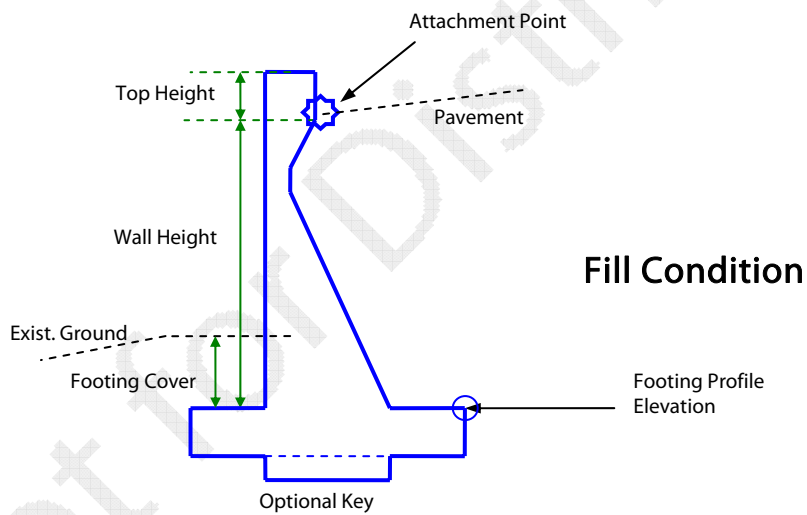


Figure 10.37 – Retain wall tapered wide.

This Subassembly creates a retaining wall structure with one tapered side and an optional key on the bottom. See the Civil 3D 2007 Help file for Cut Condition.

Retain Wall Tie to Ditch

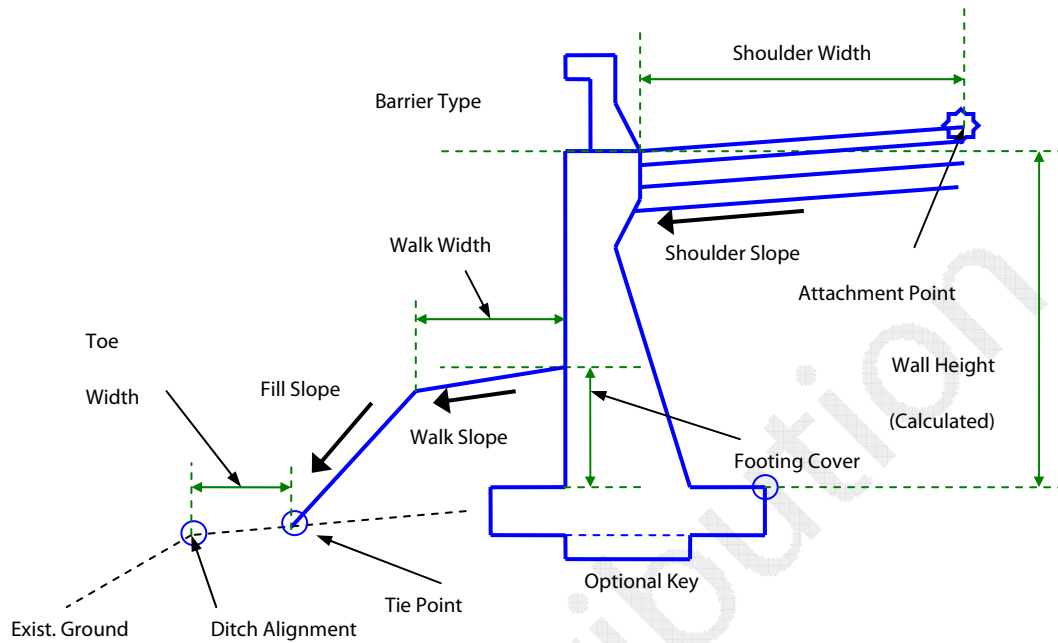


Figure 10.38 – Retain wall tie to ditch.

This Subassembly creates a retaining wall structure with a paved shoulder and slopes to tie to an existing ditch. An optional key on the bottom and a barrier on top are also possible.

Retain Wall to Low Side

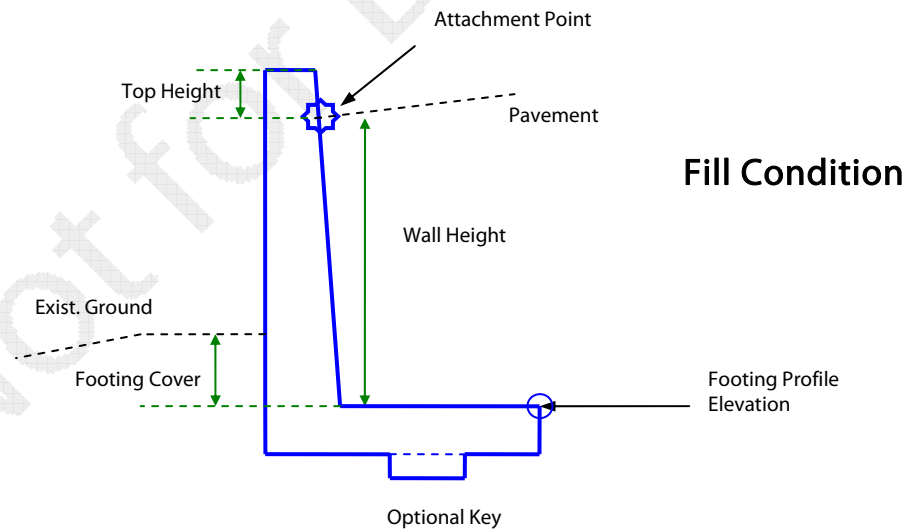


Figure 10.39 – Retain wall to low side.

This Subassembly creates a retaining wall structure with a tapered wall on one side, and the wall is pushed to the high fill side of the footing. It also has an optional key on the bottom. See the Civil 3D 2007 Help file for Cut Condition.

Retain Wall Vertical

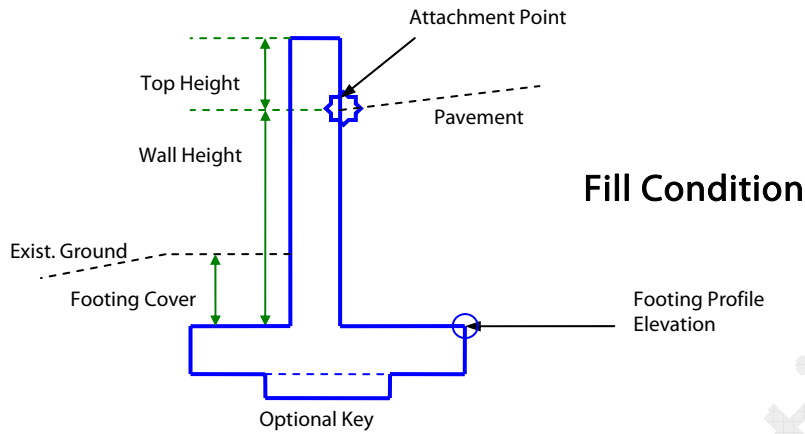


Figure 10.40 – Retain wall vertical.

This Subassembly creates a basic retaining wall structure with an optional key on the bottom. See the Civil 3D 2007 Help file for Cut Condition.